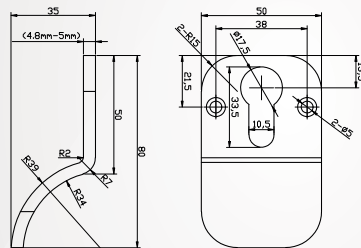


Dynamic Stainless Steel Door Cylinder Pull



Dynamic Hardware's Stainless Steel Door Cylinder Pull offers a classic style euro cylinder pull with superior product performance.

Manufactured and tested to extremely high standards, the Dynamic Stainless Steel Door Cylinder Pull offers an optimal level of corrosion resistance and outstanding product performance.



SELECTED FEATURES

- Manufactured in high strength 304 Stainless Steel.
- Brushed steel finish.
- 5mm thick 304 Stainless Steel for increased strength.
- Suitable to complement many door styles especially on period properties.

PART NUMBERS

Part Number	Description	Box Quantity
ESSFP – BRU	Finger Pull Brushed	25

STRENGTH IN PRODUCT DESIGN



The **Dynamic Stainless Steel Cylinder Pull** is suitable for use on all entrance doors including PVC-U, Timber and Composite Doors.

* Guarantee subject to correct installation and maintenance.

T: **01922 907776** | E: **info@dynamicgrouplimited.com**

The Dynamic Cylinder Pull is part of Dynamic Hardware's premium stainless steel door hardware range which includes Central Door Knobs, Door Handles, T-Bar/Square Door Pull Handles, Escutcheons, Door Knockers, Spyhole Viewers and Door Restrictors.

Dynamic HW Group Limited 8 Windmill Street, Walsall, West Midlands, WS1 3EE



Dynamic Hardware

www.dynamichardware.co.uk